

Cat. No.	Category	Test Item	Diseases	Specimen Type	Specimen Volume	Reaction Time	Measuring Range	Qualification
W282P0001	Infections Disease	Dengue NS1 Ag*	Infectious disease	S/P/WB	75 µL	12 mins	Qualitative	CE
		Dengue IgG*	Infectious disease	S/P/WB	75 µL	12 mins	Qualitative	CE
		Dengue IgM*	Infectious disease	S/P/WB	75 µL	12 mins	Qualitative	CE
W241P0002	Bone Metabolism	Vitamin D	Bone Metabolism	S/P	75 µL	15 mins	5~100 ng/mL	CE NMPA
W207	Diabetes	HbA1c	Diabetes Mellitus	WB	10 µL	5 mins	4.0~14.5%	CE IFCC NGSP NMPA
W206	Kidney Function Markers	One Step MAU	Renal Injury	Urine	75 µL	3 mins	5~300 mg/L	CE NMPA
W231	Thyroid Function	T3	Thyroid Malfunction	S/P/WB	75 µL	15 mins	0.61~9.22 nmol/L	CE NMPA
W232		T4	Thyroid Malfunction	S/P/WB	75 µL	15 mins	12.87~300 nmol/L	CE NMPA
W220		TSH	Thyroid Malfunction	S/P/WB	75 µL	15 mins	0.1~100 mIU/L	CE NMPA
W200		ft3	Thyroid Malfunction	S/P/WB	75 µL	15 mins	0.40~50.00 pmol/L or 0.26~32.55 pg/mL	CE
W259		ft4	Thyroid Malfunction	S/P/WB	75 µL	15 mins	1.00~100 pmol/L or 0.078~7.77 ng/dL	CE
W225	Fertility	β-HCG	Fertility	S/P/WB	20 µL	15 mins	2~200,000 mIU/mL	CE NMPA
W244		LH	Fertility	S/P/WB	75 µL	15 mins	1~100 mIU/mL	CE NMPA
W245		FSH	Fertility	S/P/WB	75 µL	15 mins	1~100 mIU/mL	CE NMPA
W233		Prog	Fertility	S/P/WB	75 µL	15 mins	1.5~60 ng/mL	CE NMPA
W246P0001		PRL	Fertility	S/P/WB	75 µL	15 mins	1~200 ng/mL	CE NMPA
W247-C4P1-E		E2	Fertility	S/P/WB	75 µL	15 mins	9~3000 pg/mL	CE NMPA
W248-C4P1-E		Testosterone	Fertility	S/P/WB	75 µL	15 mins	0.2~15 ng/mL	CE NMPA
W257P0001		AMH	Fertility	S/P/WB	75 µL	15 mins	0.1~16 ng/mL	CE NMPA
W202	Cardiac Markers	NT-proBNP	Heart Failure	S/P/WB	75 µL	15 mins	18~35000 pg/mL	CE NMPA
W203		cTn I	Myocardial Infarction	S/P/WB	75 µL	15 mins	0.1~50 ng/mL	CE NMPA
W204		Myo	Myocardial Infarction	S/P/WB	75 µL	15 mins	2.0~400 ng/mL	CE NMPA
W205		CK-MB	Myocardial Infarction	S/P/WB	75 µL	15 mins	0.3~100 ng/mL	CE NMPA
W216		3 in 1 (cTn I/Myo/CK-MB)	Myocardial Infarction	S/P/WB	75 µL	15 mins	Same with single items	CE NMPA
W222	BNP	Heart Failure	P/WB	75 µL	15 mins	5~5000 pg/mL single items	CE NMPA	
W240	hsCRP	CVD	S/P/WB	10 µL	3 mins	0.1~10mg/L	CE NMPA	
W254P0001	One Step cTnT	Myocardial Infarction	S/P/WB	100 µL for whole blood 75 µL for plasma/serum	15 mins	0.03~10 ng/mL	CE NMPA	
W211	Thrombus Markers	D-Dimer	Thrombosis	P/WB	15 µL for whole blood 10 µL for plasma	5 mins	0.1~10 mg/L	CE NMPA
W227		One step D-Dimer	Thrombosis	P/WB	100 µL for whole blood 75 µL for plasma/serum	15 mins	0.1~10 mg/L	CE NMPA
W210/ W210P0004	PCT	Sepsis	S/P/WB	75 µL for whole blood 50 µL for plasma/serum	15 mins	0.1~100 ng/mL	CE NMPA	
W201	Inflammation	CRP (hsCRP+CRP)	Infection	S/P/WB	8.5 µL for whole blood 5 µL for plasma/serum	3 mins	0.5~200 mg/L	CE NMPA
W251P0001		IL-6	Infection	S/P/WB	75 µL	15 mins	3~4000 pg/mL	CE NMPA
W208	Tumor Markers	AFP	Liver Cancer	S/P/WB	75 µL	15 mins	5~400 ng/mL	CE NMPA
W209		PSA	Prostate Cancer	S/P/WB	75 µL	15 mins	2~100 ng/mL	CE ₀₁₂₃ NMPA
W226		CEA	Cancer	S/P/WB	75 µL	15 mins	1~500 ng/mL	CE NMPA
W298P0001	Allergy	Total IgE	Allergic diseases	S/P/WB	75 µL	10 mins	1~1000 IU/mL	CE
W269P0001	Anemia Markers	Ferritin	Iron metabolism	S/P/WB	75 µL	10 mins	5 ~ 1000 ng/mL	CE

*Upcoming

Matrix Labs Diagnostics Private Ltd.,

S.No-114/13A, 13B, 12B, 12A2, Ground Floor,
Ponnamman Koil Street, Noombal,
Chennai-600077, Thiruvallur District, Tamilnadu, India.
+91-044-26793885, Toll free : 18001201713,
info@matrixlabs.in, www.matrixlabs.in

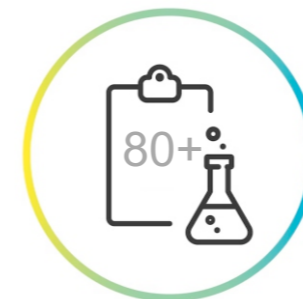


“Touching Human Lives Through Innovation”



FIA Meter II Plus SE (FS-114)

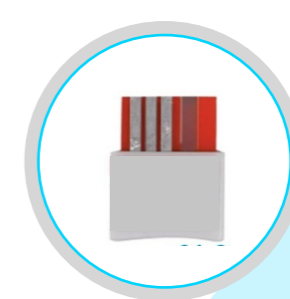
Fluorescence Immunoassay Analyzer



80+ Parameters



Result in 15 min



ID Chip Based Calibration



No wastage

Fluorescence Immunoassay Analyzer



FS-114

- Dimension : 239 x 278 x 148mm
- weight : 3.3kg



Built-in Thermal Printer

- Real-time auto-printing
- Support for auto-printing



Connectivity

- Wifi connection to LIS HIS
- RS 232 and Ethernet port
- 4 USB ports



ID Chip Port

- Automatically reading of batch number and calibration information in the ID chip

Designed Sampler

- Specially-designed sampler for small volume of specimen



Test Reagent

- Suitable for whole blood, serum, plasma and urine
- Room temperature storage
- Get results in 3-15 minutes

Linux System

- Smooth operation
- Security system
- Custom intelligent management module
- Multi-user management

Large Display

- 8" LCD Capacitive touch screen
- Intuitive user interface

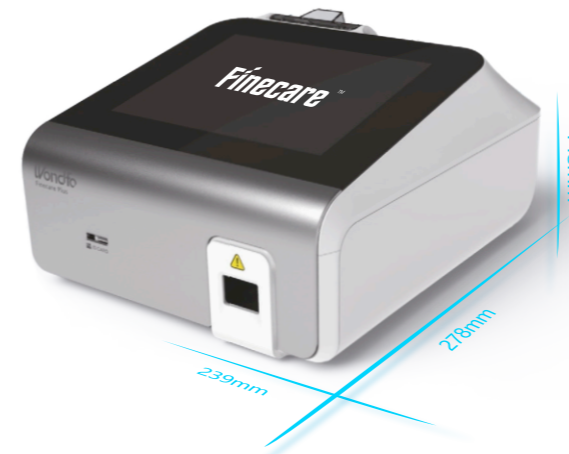
Portability

- 7800mAh battery
- internal rechargeable battery
- 21-hours stand by time
- ≥200 tests without power supply

Test Device Tray 40+

- Multiple testing modes available
- Unique quick mode for large number of samples

Technical Advantages



Portable

- Small size,
- 7800mAh built-in battery



Convenient

- Easy to operate,
- large curved handle



Instant Results

- Get results in 3-15 minutes



Reliable Accuracy

- Good correlation with CLIA method

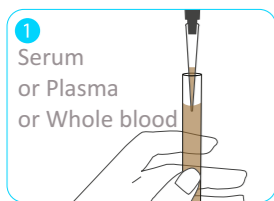


Temperature Control

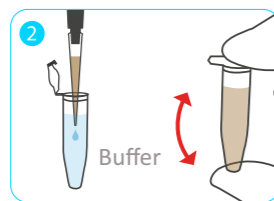
- Provide better reaction condition



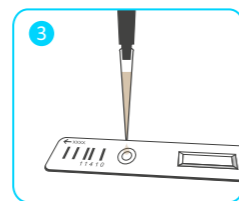
Operation Procedure



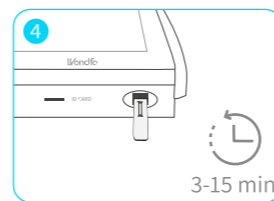
Sampling



Mixing



Dropping



Reading

Application



Laboratory



ER



Ambulance



Clinics



ICU



Clinical department