

# EHBT-50 Minilab

## Multi-Functional Analyzer

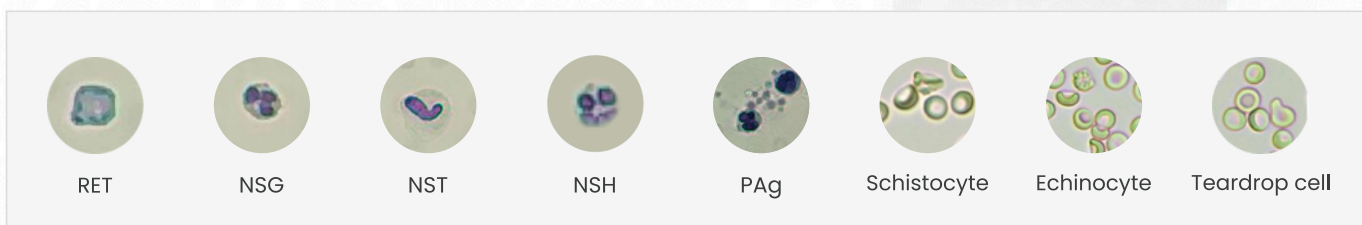
7-Diff Hematology + Immunology + Biochemistry analysis

### All-In-One

- Combining hematology, immunoassay, biochemistry, urine and fecal testing in one device, our product simplifies diagnostics, reduces costs, and optimizes lab space, catering to the needs of healthcare

### Advanced Cell Morphology Analysis

- With more than 7-diff hematology analysis, AI-driven EHBT-50 can identify multi-classified blood cells and abnormal cells, such as **NST, NSG, NSH, NLR, PLR, ALY, PAg and RET**



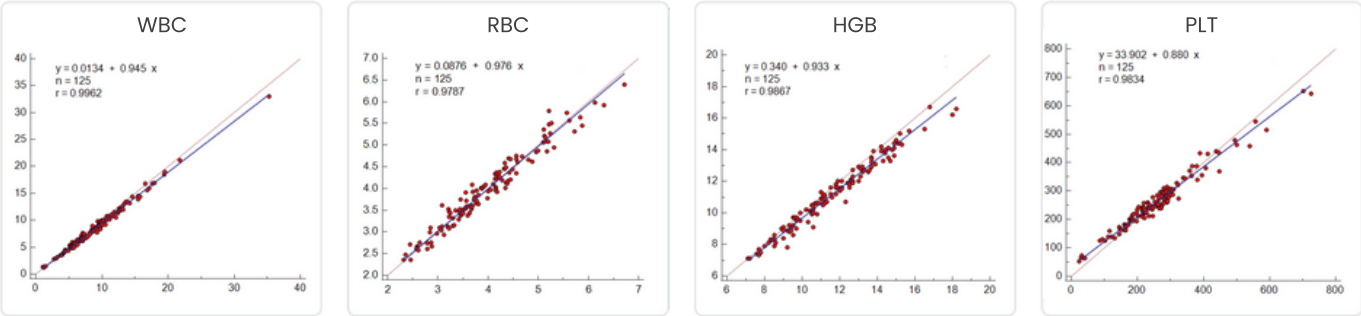
### Linearity

Parameters	Linearity Range	Allowable Deviation	R <sup>2</sup>
WBC	1.0 ~ 10.0*10 <sup>9</sup> /L	Within ±0.5*10 <sup>9</sup> /L	≥0.990
	10.1 ~ 99.9*10 <sup>9</sup> /L	Within ±5%	≥0.990
RBC	0.30 ~ 1.00*10 <sup>12</sup> /L	Within 0.05*10 <sup>12</sup> /L	≥0.990
	1.01 ~ 7.00*10 <sup>12</sup> /L	Within ±5%	≥0.990
HGB	20 ~ 70g/L	≤2g/L	≥0.990
	71 ~ 200g/L	Within ±3%	≥0.990
PLT	20 ~ 100*10 <sup>9</sup> /L	Within ±10*10 <sup>9</sup> /L	≥0.990
	101 ~ 999*10 <sup>9</sup> /L	Within ±10%	≥0.990

### Precision

Parameters	Detection Range	CV
WBC	3.5 ~ 9.5*10 <sup>9</sup> /L	≤6.0
RBC	3.8 ~ 5.8*10 <sup>12</sup> /L	≤3.0
HGB	115 ~ 175g/L	≤2.5
PLT	125 ~ 350*10 <sup>9</sup> /L	≤10.0
HCT/MCV	35~50% (HCT)	≤3.0
	82~100fL (MCV)	≤3.0

# Lab-Grade Results



## Test Item

<b>7-Diff CBC</b>	<b>37 Parameters:</b> WBC, NEU#, LYM#, MON#, EOS#, BAS#, NEU%, LYM%, MON%, EOS%, BAS%, RBC, HGB, HCT, MCV, MCH, MCHC, RDW-SD, RDW-CV, PLT, MPV, PDW, PCT, P-LCR, P-LCC, NST#, NST%, NSG#, NSG%, NSH#, NSH%, NLR, PLR, ALY#, PAG#, RET#, RET%			
<b>Immunoassay</b>	<b>Bone Metabolism</b>	25-OH-VD	<b>Diabetes</b>	HbA1c
	<b>Kidney</b>	mALB*, NGAL*, β2-MG*	<b>Thyroid</b>	T3, T4, TSH, FT3*, FT4*
	<b>Anemia</b>	Ferritin*	<b>Cardiac</b>	NT-ProBNP*, cTnI, Myo* CK-MB*, cTnI/Myo/CK-MB*, cTnT*
	<b>Sex Hormone</b>	β-HCG*, LH*, FSH*, Prog*, PRL*, E2*, TEST*, AMH*		
	<b>Inflammation</b>	CRP, hs-CRP, SAA*, CRP/SAA*, IL-6*, PCT	<b>Thrombus</b>	D-Dimer*
<b>Biochemical Test</b>	<b>Blood Glucose &amp; Lipid</b>	Glu, TG, TC, UA	<b>Renal &amp; Liver Test</b>	UA, CR, ALT, AST
	<b>Renal Test</b>	UA, CR, UREA	<b>Liver Test</b>	ALT, AST, TB, ALB
<b>Urine &amp; Fecal Test</b>	Can be expanded via OTA in the future			

\*Under development

## Specifications

**Principle:** Cell morphology for CBC  
 Photoelectric colorimetry for HGB  
 FIA for Immunofluorescence assay  
 Dry chemistry

**Display:** 10.1-inch touch screen

**Printer:** Built-in thermal printer, external printer (optional)

**Dimensions:** 400mm x 350mm x 450mm (L x W x H)

**Communication:** LIS, HIS, LAN port, 4 USB ports, Type C port,  
 SIM port, RTC port

**Sample Mode:** Capillary/venous whole blood

**Sample Volume:** 30µL for testing  
 60µL for loading

**Quality Control:** Dry-type QC card

**Calibration Mode:** Auto calibration

**Power Supply:** 100-240V, 50/60HZ

**Throughput:** 10 samples/hour

**Weight:** 15kg (N.W.)



**Ozelle**

BEESKOWER STRABE 4 IN 15234 FRANKFURT, GERMANY  
 info@ozellepoc.com www.ozellepoc.com

CE  
 RPS/737/2024

